



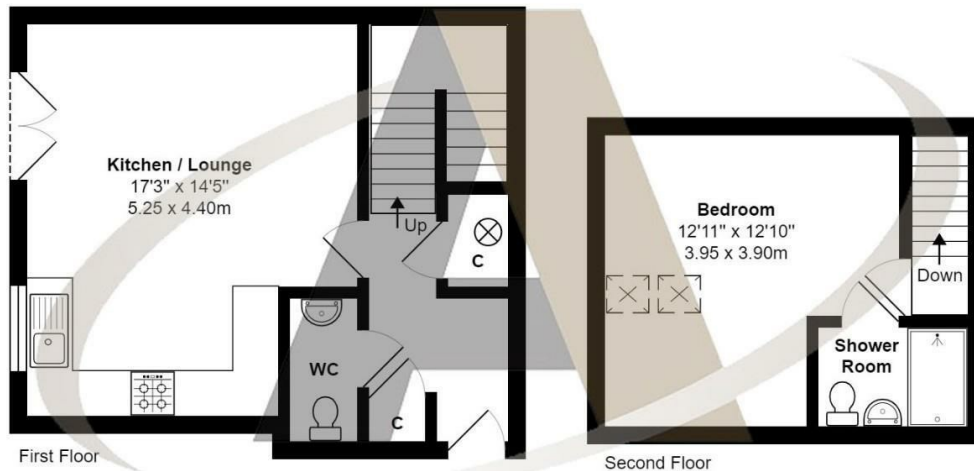
OakHouse, Kenilworth Road
Ashford TW15 3FB
£230,000

Oak House, Kenilworth Road, Ashford, TW15 3FB

Aspen Residential are delighted to bring to the market a rarely available split-level flat situated to the rear of this gated development in a popular residential area in Ashford, within easy reach of the town centre, bus routes, and the station. Offered for sale with no onward chain this one-bedroom flat benefits from a large open plan kitchen/lounge with fitted appliances & Juliette Balcony, a downstairs cloakroom, stairs lead up to a double bedroom with an en suite shower room. The development is set in its own secure gated grounds with allocated parking and an entryphone system. Keenly priced and highly recommended for early viewing.



Floor Plan



Flat 6, Oak House, Kenilworth Road, Ashford

Total Area: 578 ft² ... 53.7 m²

All measurements are approximate and for display purposes only

Area Map



Features

- Split Level Apartment
- Large Lounge with Juliette Balcony
- Guest Cloakroom
- Share Of Freehold
- Double Bedroom
- En Suite Shower Room
- Allocated Parking
- No Onward Chain

